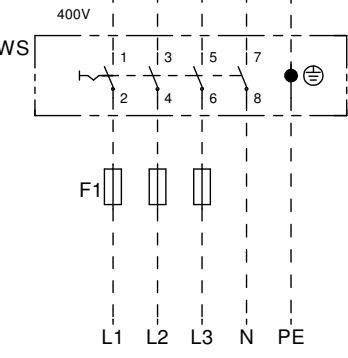
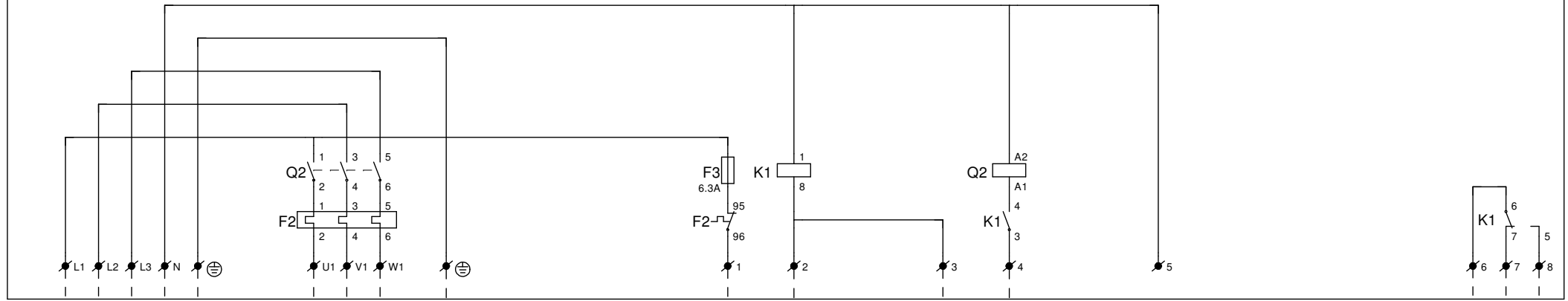
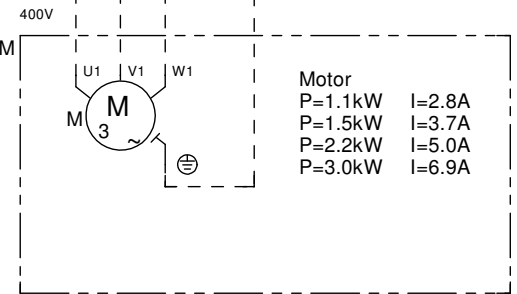


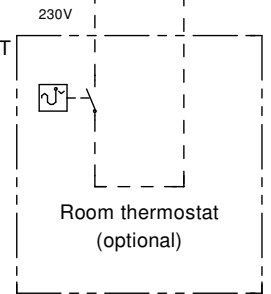
Motor control panel Tanner MDC 400, 3~400V



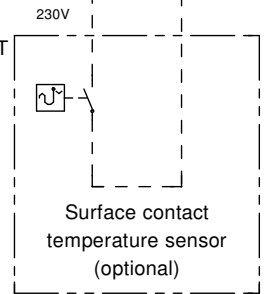
Power supply
3~400V + N + PE / 50Hz



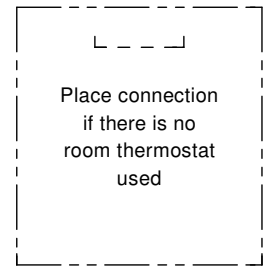
Motor
P=1.1kW I=2.8A
P=1.5kW I=3.7A
P=2.2kW I=5.0A
P=3.0kW I=6.9A



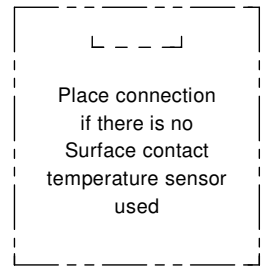
Room thermostat
(optional)



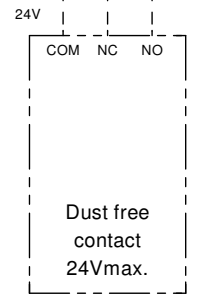
Surface contact
temperature sensor
(optional)



Place connection
if there is no
room thermostat
used



Place connection
if there is no
Surface contact
temperature sensor
used



Dust free
contact
24Vmax.

Motor control panel MDC 3~400V					
codenr.	Motor type		Thermal protection (F2)		Fuse (F1)
30.03.502	P= 1.1kW	I= 2.8A	06.32.174	2.7-4.0A	F= 10A
30.03.503	P= 1.5kW	I= 3.7A	06.32.174	2.7-4.0A	F= 16A
30.03.504	P= 2.2kW	I= 5.0A	06.32.175	4.0-6.0A	F= 16A
30.03.505	P= 3.0kW	I= 6.9A	06.32.176	6.0-9.0A	F= 20A

WS - Isolator switch